

Manufacturer of Life Science  
Instruments since 1979

# Herolab

GmbH

Laborgeräte

E.A.S.Y  
Doc plus

## *E.A.S.Y® Doc plus*

The Herolab gel documentation system **E.A.S.Y Doc plus** and its analysis software **E.A.S.Y Win** are synonym for high quality and user-friendly design. The amount of the worldwide systems in use and the average life time have been proving this impressively.



## *E.A.S.Y® Doc plus*

Darkroom hood with High Contrast Transilluminator on a pull-out rail,  
Herolab Scientific Grade CCD camera and **E.A.S.Y Win** software Module A plus  
and optional computer

### Advantages:

- The high-performance Scientific Grade CCD camera in combination with a light-sensitive zoom-lens and as well the High Contrast transilluminator allow the detection of smallest amounts of the samples.
- The **E.A.S.Y Doc plus** gel documentation system is most reliable for all daily routines.
- The modular concept allows the easy exchange of parts when innovations are made for single components.

All products built by Herolab carry the CE sign. Herolab is certified according to DIN EN ISO 9001:2008 and DIN EN ISO 13485.  
Herolab reserves the right to change technical specifications without prior notice.

Herolab GmbH Laborgeräte  
Ludwig-Wagner-Str. 12  
69168 Wiesloch  
GERMANY

Page 1 of 3

Tel.: +49 (0) 6222 – 5802-0  
Fax: +49 (0) 6222 – 5802-34  
E-Mail: [info@herolab.de](mailto:info@herolab.de)  
Internet: [www.herolab.de](http://www.herolab.de)

2019-04

GEL DOCUMENTATION SYSTEMS

## System components (1-3):

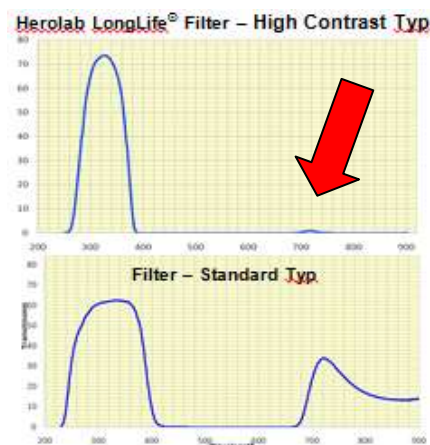
### 1. Scientific Grade CCD camera

- Color
- 1,2 Megapixel on 1/2" chip  
→ **big pixel for best image results**
- Binning function for maximum of sensitivity
- **Light-sensitive zoom lens**, 1/2", 8-48 mm, f 1:1.0
- Special ethidium bromide filter  
(other filters on request)



### 2. Darkroom hood with High Contrast transilluminator

- Hood with camera holder (opt.: moveable camera bracket)
- High Contrast transilluminator 312 (302) nm  
on a pull-out rail  
filter size: 22 x 28 cm  
(other UV wavelengths or LED White/Blue Light on request)
- High/Low-switching on the front of the hood
- UV protection shield behind outer doors
- UV timer, UV lights will switch off automatically
- Epi White light switch  
(optional Epi UV or Epi Blue light)
- Dimensions with camera: 52 cm x 60 cm x h 70 cm

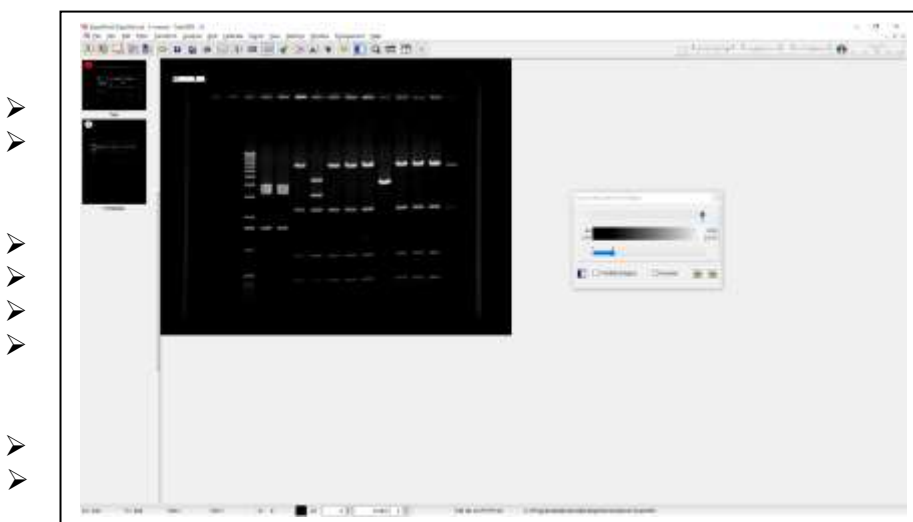


### 3. E.A.S.Y® Win software

#### → Module A plus

- Camera control
- On-Screen visualization of over- or underexposure
- Grey level control
- Annotations
- Import-/Export functions
- GLP conformity
- Language selectable: German / English

The **High Contrast-Filter** does not allow transmission of visible light, see above.  
Thus, the result is a much better contrast, even weak bands in your gel become visible.



All products built by Herolab carry the CE sign. Herolab is certified according to DIN EN ISO 9001:2008 and DIN EN ISO 13485.  
Herolab reserves the right to change technical specifications without prior notice.

➤ **Gel Documentation System:**

Cat.-No.	Description
28 09 300	<b>E.A.S.Y® Doc plus</b> Gel Documentation System System components 1-3, without computer, without printer

➤ **E.A.S.Y® Win - Analysis Software** (for details see extra brochure)

Cat.-No.	Module	Description
28 09 411	<b>Module A plus</b>	Basic Software with camera control (included in system E.A.S.Y Doc plus))
28 09 412	Module B	Molecular Weight and Volume Analysis
28 09 413	Module C	Spot 2D Analysis of Single Volumes
28 09 414	Module D	Dot-Blot-Analysis (ELISA)
28 09 415	Module E	Microtiter Plate Analysis
28 09 416	Module F	Thin layer Chromatography Analysis
28 09 417	Module G	Programmable Quantitative Row Analysis
28 09 425	Modules A and B	no camera control, Dongle version for analysis only
28 09 431	Modules A plus, B and C	with camera control, Dongle version

➤ **Optional Components and Devices:**

Cat.-No.	Description
28 03 950-1	Moveable Camera Bracket (no filter slider possible)
28 08 810	Filter slider, manual, 3 Positions for Emission filters for different dyes (belated assembly not possible)
28 00 971	UV light as epi light on both sides (254 or 312 or 365 nm, max. 2)
28 09 974	LED Blue light as epi light on both sides
29 87 200	Filter protection plate 22 x 28 cm
29 86 130	Radicon® UV to Visible light Converter plate 30 x 30 cm
29 75 280	White light Transilluminator UVT-28 WE-LED
29 78 280	Blue light Transilluminator UVT-28 BE-LED
28 08 xxx	Emission filters for different dyes
28 09 095	Digital Thermo Sublimation printer <b>Mitsubishi P 95 DE</b>
28 97 007	High Power <b>Windows-PC</b> with Screen, Keyboard and Mouse

Emission Filters



LED-Blue light Transilluminator



Printer Mitsubishi P 95 DE

All products built by Herolab carry the CE sign. Herolab is certified according to DIN EN ISO 9001:2008 and DIN EN ISO 13485.  
Herolab reserves the right to change technical specifications without prior notice.